

# AmpSnap® Ampoule Breaker



AmpSnap® fits ampoules from 1-10 ml.



Both ends can be used.

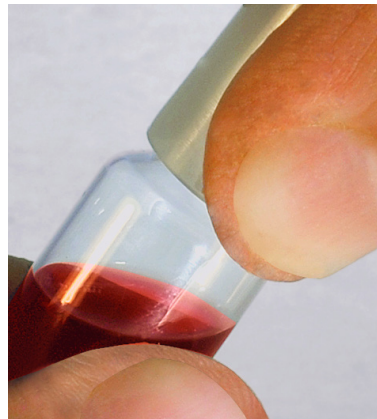
## Instruction:

AmpSnap® safely captures the sharp ampoule tip to protect the user and eliminate the risks associated with handling ampoule waste.

Many users break ampoules by simply using swabs or gauze pieces which puts them at risk of cuts from sharp edges.



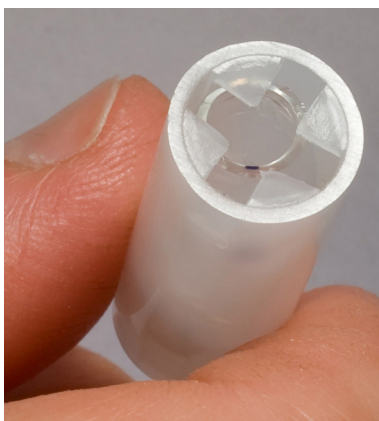
Push either one of the AmpSnap® ends completely over the ampoule neck and snap at the scored line, if present.



Using the AmpSnap® and a firm two-handed grip, bend the ampoule tip against you to safely break it.

AmpSnap® should also be used when a file is required to lightly score the ampoule prior to breaking.

The Swedish made AmpSnap® is made of environmentally friendly PE.



The broken ampoule tip is safely captured inside the AmpSnap® to prevent injury.



AmpSnap®, for clear cuts. Protects from sharp damaging glass edges.

***By using AmpSnap®, you reduce the risk of cuts when breaking ampoules.***

